

MOST MALFUNCTIONS  
AREN'T VISIBLE TO  
THE NAKED EYE.





SUI

303°F

334

69.8

DIAGNOSTIC THERMAL IMAGER



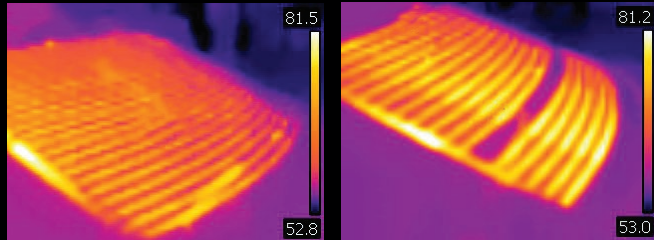
UNTIL NOW.  
INTRODUCING THE ALL-NEW  
DIAGNOSTIC THERMAL IMAGER.

# IMAGINE A TOOL THAT LET'S YOU SEE HEAT.

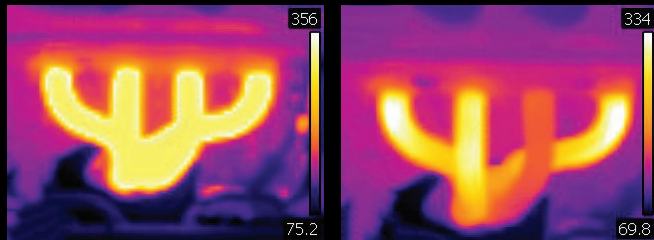
The Diagnostic Thermal Imager is uniquely designed for the automotive industry and uses infrared technology to reveal the detailed heat signature of any object. It can reveal heat caused by friction, electrical resistance, pressure changes and more. You truly can see hot and cold areas of vehicle components like never before and identify both functioning and non-functioning components easily, for a much faster diagnosis.

## EXCLUSIVE DATABASE OF GUIDED TESTS.

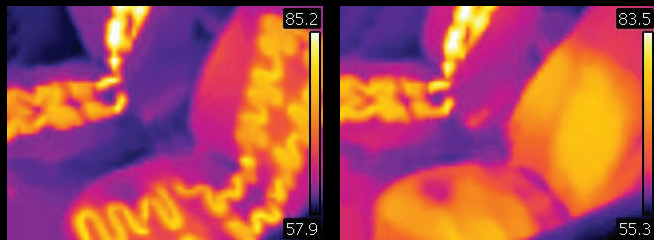
REFERENCE IMAGES SHOW FUNCTIONING AND NON-FUNCTIONING COMPONENTS.



Find breaks in rear window defoggers.



View exhaust heat to detect cylinder misfires.



See malfunctions in seat heater elements.

## SEE MORE THAN THE TEMPERATURE

Rather than just giving you a single temperature reading, the Diagnostic Thermal Imager shows every detail with complete thermal images made up of 4,800 temperature zones. The color scale automatically calibrates, so you know the exact temperature of everything in the image. And the center target gives you a precise digital display of the temperature at any point you choose.

## SEE THE WHOLE CAR, IN A WHOLE NEW WAY

Now with the ability to see heat, it's easy to track down faults on any vehicle. From brakes and heated seats, to misfiring cylinders and worn bearings and anything else under the hood or around the car, the Diagnostic Thermal Imager allows you to see extreme temperatures up to 448° C with precision.

## POINT. SHOOT. FIX.

Diagnosing vehicles just got a whole lot faster and more accurate. The Diagnostic Thermal Imager comes fully loaded with a database full of automotive applications, guided tests, and reference images to help you interpret results. And with the ability to take and store your own images, it's easy to create convincing repair orders for your customers.

# A BREAKTHROUGH TOOL DESERVES A BREAKDOWN





When you choose a Sun diagnostic tool, you gain a long-term partner. Experienced SUN team of specialists are always here ready to serve you with our support and experience. We will support you by offering product support, training, special warranty conditions and access for attractive promotions and commercial offers. Contact your SUN distributor, other sales representative or go to [www.sun-workshopsolutions.com](http://www.sun-workshopsolutions.com) to learn how you can see more, in a more efficient way.